

Un jour, une activité : Ecrire les lettres (après les avoir formées à la pâte à modeler)

Domaine disciplinaire **Écriture**

Cycle et/ou niveau de classe **Moyenne section**

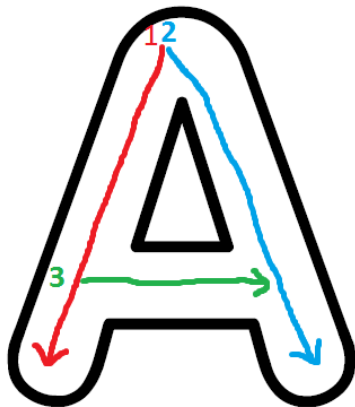
Description de l'activité : **Ecrire les lettres.**

Matériel **Papier crayons ou feutres**

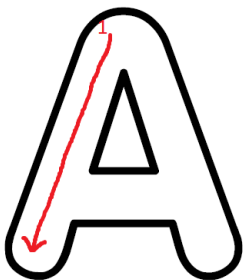
Durée maximale de l'activité : **Un quart d'heure par jour, seulement quelques lettres à la fois**

Étape 1 : Repasser avec son doigt dans les modèles de lettres en respectant le sens du tracé :

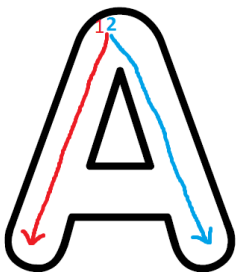
Exemple :



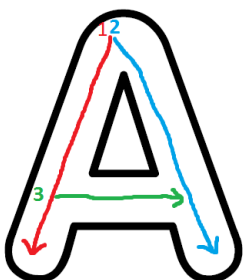
Les chiffres indiquent l'ordre du tracé. Les flèches indiquent le sens :



On part du 1 et on suit la flèche jusqu'en bas.

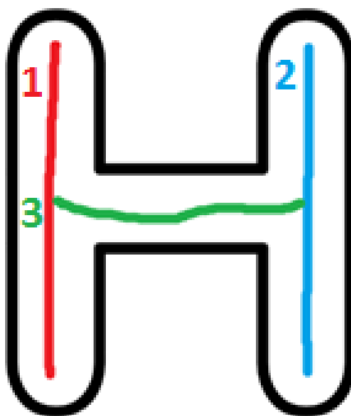
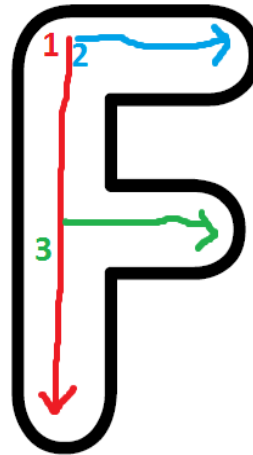
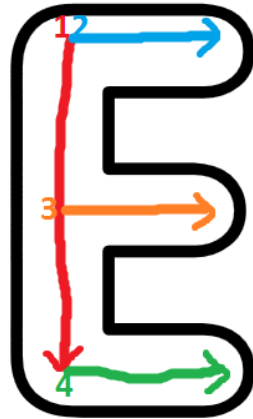
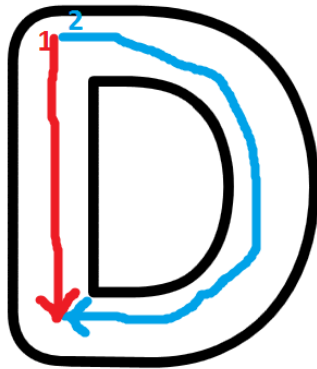
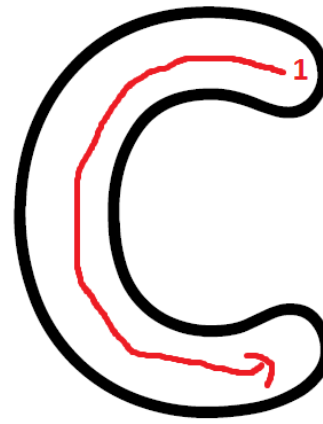
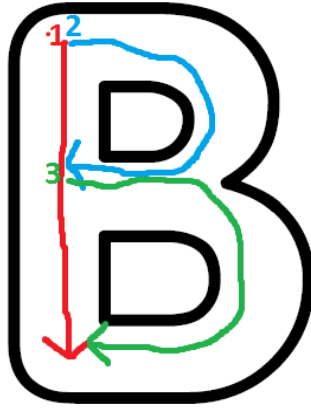
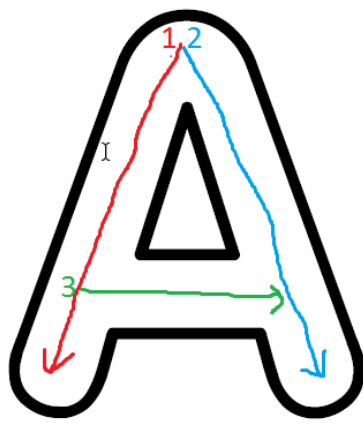


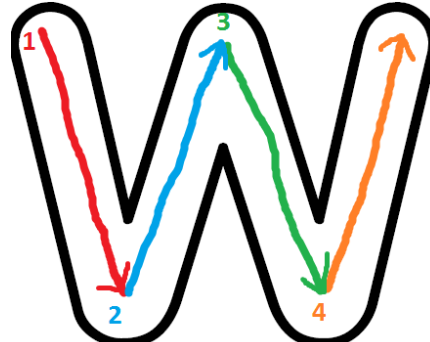
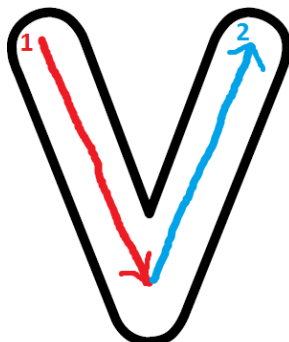
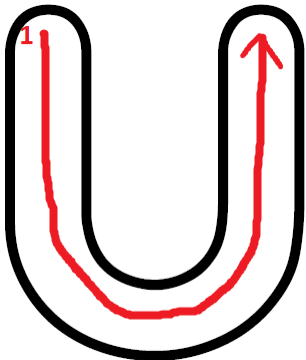
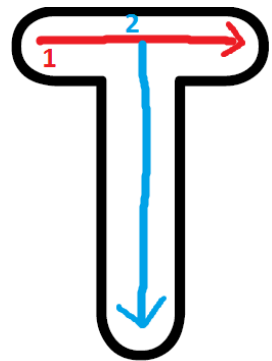
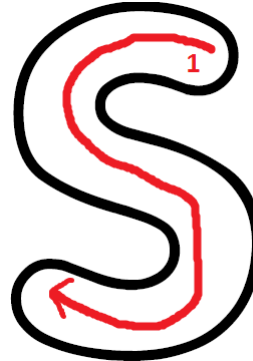
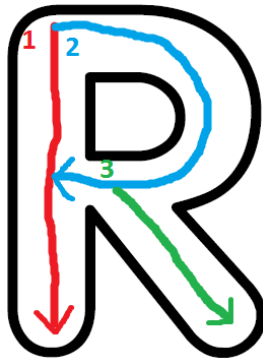
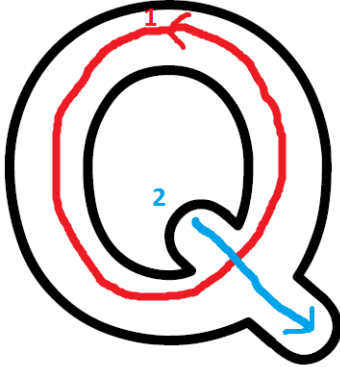
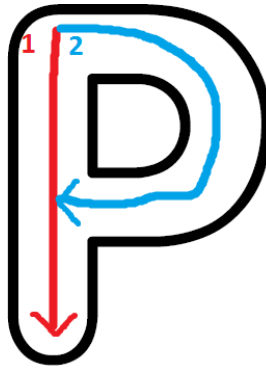
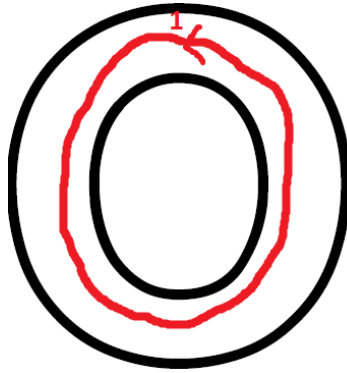
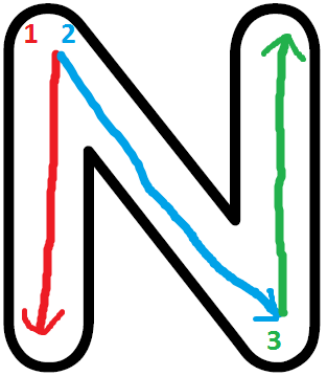
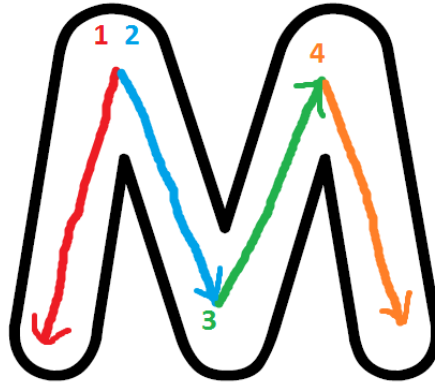
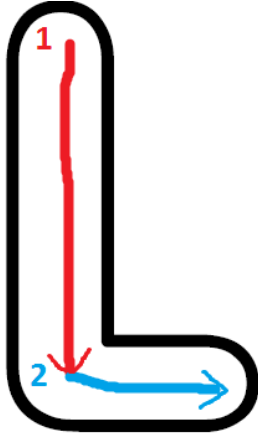
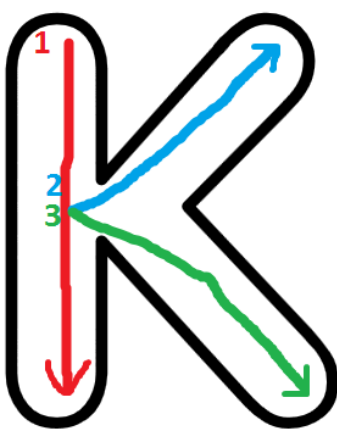
Ensuite on part du 2 et on suit la flèche.

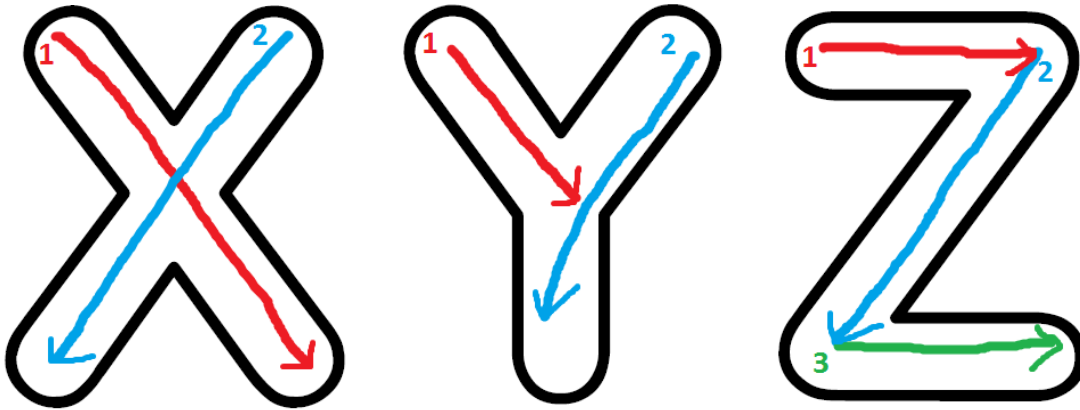


Enfin, on part du 3 et on suit la flèche.

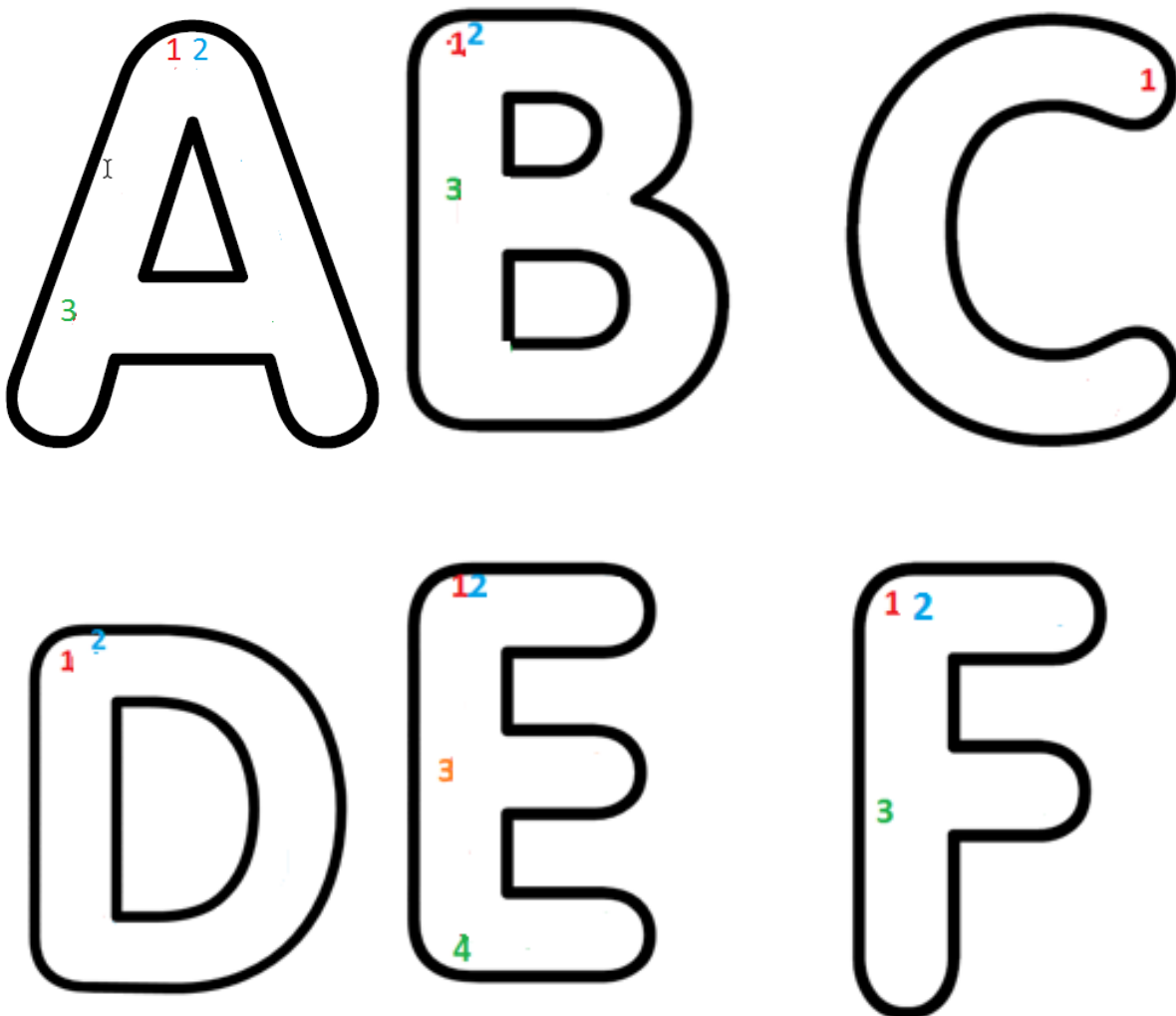
Selon les lettres, on trace un, deux, trois ou quatre traits.

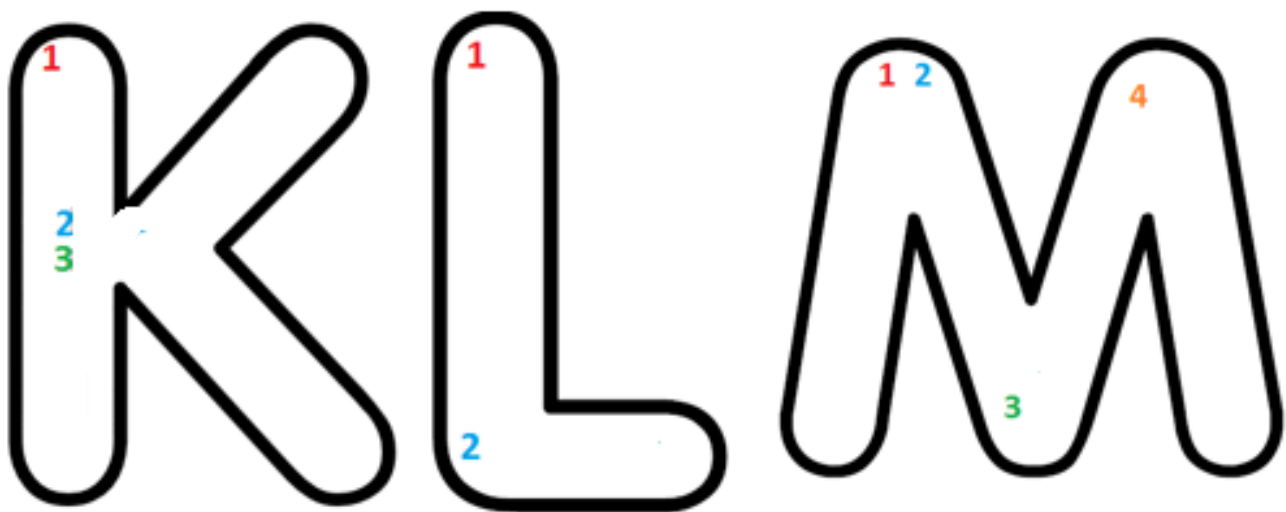
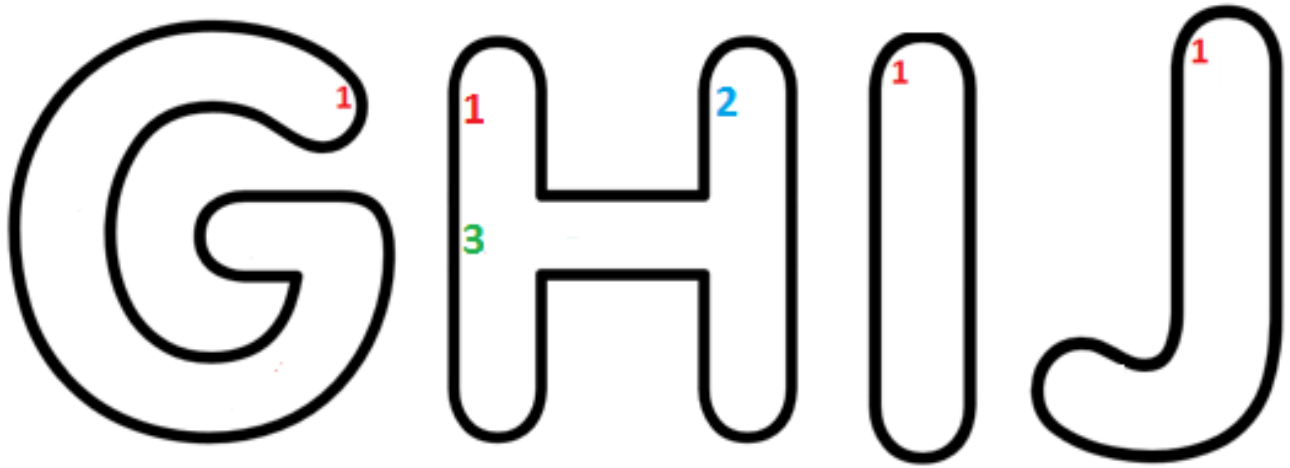






Etape 2 : Tracer les lettres au crayon dans le modèle





N

O

P

Q

R

S

T

U

V

W

X

Y

Z

Etape 3 : Tracer les lettres au crayon dans un tableau avec le modèle sous les yeux

A	B	C
D	E	F
G	H	I
J	K	L

M	N	O
P	Q	R
S	T	U
V	W	X

Y	Z	
---	---	--

| [Pour aller plus loin : Ressources en ligne](#)